



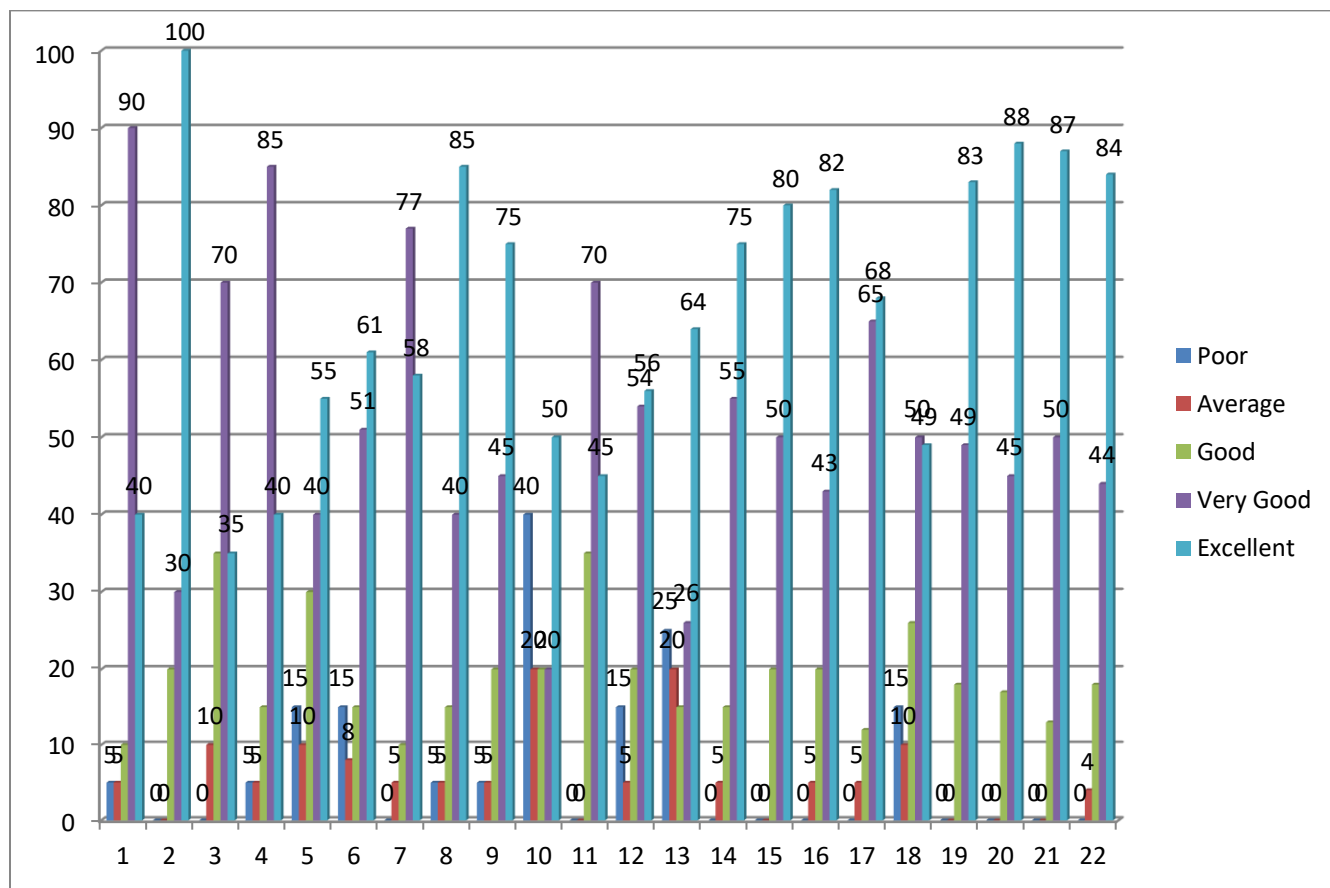
## Student's Satisfaction Feedback Analysis Report

**Name of the feedback :** Student's Satisfaction Feedback

**Total number of response from students: 150**

**Academic year :** 2020-21

**Graphical analysis :**





**B. L. D. E. Association's**  
**Shri. Sanganasava Mahaswamiji**  
**College of Pharmacy & Research Centre, Vijayapura - 586 103**

(Formerly; BLDEA's College of Pharmacy, Bijapur (Vijayapura), since 1982)

[Affiliated to RGUHS-Karnataka, Approved by PCI & AICTE-New Delhi, Accredited by NAAC at 'B' Grade with CGPA 2.40]

Sr. No	Evaluation Parameters (Questions)	0	1	2	3	4
1	How much of the curricula and syllabi are covered in the Discipline in which you are studying?	5	5	10	90	40
2	What categories of teachers are involved in the theory and practical classes in your discipline?	0	0	20	30	100
3	What percentage of teachers is effectively communicating domain knowledge, IT skills and Soft Skills in the Teaching Learning Process?	0	10	35	70	35
4	Do the teachers build-up in you the expected curricular competencies, programme outcomes and course outcomes?	5	5	15	85	40
5	Does your mentor do necessary follow up of the tasks assigned to you?	15	10	30	40	55
6	To what extent the mentoring process in your institution is beneficial to you for cognitive, social and emotional growth?	15	8	15	51	61
7	To what extent clinical and practical facilities related to your discipline have been made available to you?	0	5	10	77	58
8	What extent of training you are provided in the skill and simulation labs, clinical ward rounds / rotations and lab exercises related to your discipline?	5	5	15	40	85
9	What percentage of teachers use ICT-enabled methods like multimedia, web-based learning and national e-resources while teaching?	5	5	20	45	75
10	What is the extent of opportunities given to you for outdoor learning like internship, student exchanges, field visits and projects?	40	20	20	20	50
11	Does the institution provide the opportunities for experiential learning, like problem-based learning, case-based learning, evidence-based learning, competency building, seminars, group discussions, to enhance knowledge and skills in your discipline?	0	0	35	70	45
12	What is the level of opportunities provided by your institution to develop employability and entrepreneurship skills to prepare you for your career?	15	5	20	54	56
13	What is the level of value-added courses / training given by your institution in the area of professional ethics and values, community service, preventive health care and rural health care?	25	20	15	26	64
14	What level of monitoring and evaluation is available in your institution for assessing the effectiveness and interactiveness of the classroom/learning sessions?	0	5	15	55	75
15	To what extent the institutional ambience and class room teaching has improved your creative thinking and analytical skills?	0	0	20	50	80
16	How frequently your performance in academic assignments are discussed and reviewed with you by the teachers?	0	5	20	43	82
17	What is your assessment about the fairness of the internal evaluation process by the teachers?	0	5	12	65	68
18	What is the average time taken by the institution for declaration of examination results?	15	10	26	50	49
19	What are the mechanisms (issue of photocopy of answer sheet, re-totaling, re-evaluation and provision of grace marks) available in your institution for redressal of grievances with reference to examinations?	0	0	18	49	83
20	How do you rate the procedures involved in the pre examination, examination and post examination processes of the evaluation system adopted by your institution?	0	0	17	45	88
21	Do your teachers enable you to identify your strengths and weaknesses and help you to develop your strengths and overcome your weaknesses by providing timely counseling and care?	0	0	13	50	87
22	If you were to award rating of your institution in terms of "stars" in relation to quality of teaching learning and evaluation, what would be your rating?	0	4	18	44	84

\* 0- Poor, 1-Average, 2- Good, 3-Very Good, 4-Excellent

**Smt. Bangaramma Sajjan Campus, Shri. B. M. Patil Road, Vijayapura-Karnataka-586 103 (INDIA)**

www.bldeapharmacy.ac.in, email: bldeascop@yahoo.com, Mob: +91-9513398036, 08352-264004

[BLDE Deemed to be University Campus]