



B. L. D. E. Association's
Shri. Sanganabasava Mahaswamiji

College of Pharmacy & Research Centre, Vijayapura - 586 103

(Formerly; BLDEA's College of Pharmacy, Bijapur (Vijayapura), since 1982)

[Affiliated to RGUHS-Karnataka, Approved by PCI & AICTE-New Delhi, Accredited by NAAC at 'A++']

1.4.1. Feedback from Stakeholders

Smt. Bangaramma Sajjan Campus, Shri. B. M. Patil Road, Vijayapura-Karnataka-586 103 (INDIA)

www.bldeapharmacy.ac.in, email: bldeascop@yahoo.com, Mob: +91-9513398036, 08352-264004

[BLDE Deemed to be University Campus]



B. L. D. E. Association's

Shri. Sanganasava Mahaswamiji

College of Pharmacy & Research Centre, Vijayapura - 586 103

(Formerly; BLDEA's College of Pharmacy, Bijapur (Vijayapura), since 1982)

[Affiliated to RGUHS-Karnataka, Approved by PCI & AICTE-New Delhi, Accredited by NAAC at 'A++']

SAMPLE UNFILLED QUESTIONNAIRES

Smt. Bangaramma Sajjan Campus, Shri. B. M. Patil Road, Vijayapura-Karnataka-586 103 (INDIA)
www.bldeapharmacy.ac.in, email: bldeascop@yahoo.com, Mob: +91-9513398036, 08352-264004

[BLDE Deemed to be University Campus]

Feedback from Students on Curriculum

* Indicates required question

1. Email *

2. Name *

3. Phone number *

4. Course *

Mark only one oval.

B-Pharm

M-Pharm

Pharm-D

Principal
Principal,

**BLDEA's S.S.M. College of
Pharmacy & Research Centre
TAYAPUR-586103**

Principal
BLDEA's S.S.M. College of
Pharmacy & Research Centre
TAYAPUR-586103

5. Feedback from Students on Curriculum *

Poor Average Good Excellent

1. How do you rate the sequence of the Courses that you have studied are in sequence to what you have studied in the previous semester?

2. How do you rate the syllabus of the courses that you have studied in relation to the competencies expected out of the course?

3. How do you rate the relevance of the units in Syllabus relevant to the course?

4. How do you rate the sequence of the units in the course?

5. How do you rate the distribution of the contact hours among the course components (Lecture-

Page 02 of 29

Page 02 of 29

Principal

Principal,

BLDEA's S.S.M. College of
Pharmacy & Research Centre
VIJAYAPUR-586103

Tutorial-
Practical)?

6. How do you
rate the
offering of the
electives in
terms of their
relevance to
the
specialization
streams?

7. How do you
rate the
electives
offered in
relation to the
professional
advancements?

8. How do you
rate the
relevance of
the Text Books
and reference
books by their
International
recognition to
the Courses?

9. Rate the Size
of syllabus in
terms of the
load on the
student

10. Rate the
courses in
terms of extra
learning or self
learning
considering the
design of the
courses

11. Rate the
courses in
terms of
sequence of
offering
considering

whether the preceding courses have been covered.

12. How do you rate the percentage of courses having LAB components?

13. How do you rate the domain used for designing the experiments for the LAB components?

14. How do you rate the experiments in relation to the real life Applications?

6. 15. Any suggestions on Curriculum *

This content is neither created nor endorsed by Google.

Google Forms

Page 04 of 29

Principal,
BLDEA's S.S.M. College of
Pharmacy & Research Centre
VIJAYAPUR-586103

Page 04 of 29

Aneel
Principal,
BLDEA's S.S.M. College of
Pharmacy & Research Centre
VIJAYAPUR-586103

Feedback from Alumni on Curriculum

* Indicates required question

1. Email *

2. Name *

3. Phone number *

4. Current employment details

B. Anand

Principal,
BLDEA's S.S.M. College of
Pharmacy & Research Centre
VIJAYAPUR-586103

5. Feedback from Alumni on Curriculum *

	1. Poor	2. Average	3. Good	4. Excellent
1. How do you rate relevance of the courses in relation to the program?	<input type="radio"/>	<input type="radio"/>	<input type="radio"/>	<input type="radio"/>
2. How do you rate the sequence of the courses included into the programs?	<input type="radio"/>	<input type="radio"/>	<input type="radio"/>	<input type="radio"/>
3. How do you rate the competencies in relation to the course content?	<input type="radio"/>	<input type="radio"/>	<input type="radio"/>	<input type="radio"/>
4. How do rate the sequence of the topics in the units?	<input type="radio"/>	<input type="radio"/>	<input type="radio"/>	<input type="radio"/>
5. Rate the offering of the in relation to the specialization streams?	<input type="radio"/>	<input type="radio"/>	<input type="radio"/>	<input type="radio"/>
6. How do you rate the offering of the electives in relation to the professional advancements?	<input type="radio"/>	<input type="radio"/>	<input checked="" type="radio"/>	<input type="radio"/>
7. How do you rate the courses which are skills related suiting	<input type="radio"/>	<input type="radio"/>	<input type="radio"/>	<input type="radio"/>

B. Anand
Principal,
ALDEA's S.S.M. College of
Pharmacy & Research Centre
VIJAYAPUR-586103

to the Industry
included into
the programs?

8. How do you
rate the domain
used for
designing the
experiments in
terms of the
suitability of
the Tools to the
domain?

9. How do you
rate the
experiments in
terms of their
relevance to
the real life
application?

10. How do you
rate the
courses that
you have learnt
in relation to
your current
Job

6. Any suggestions regarding Curriculum *

B. Anant
Principal,

BLDEA's S.S.M. College of
Pharmacy & Research Centre,
VIJAYAPUR-586103

Feedback from Faculties on Curriculum

* Indicates required question

1. Email *

2. Name of the Faculty *

3. Designation *

4. Phone number *

B. Anil
Principal,
BLDEA's S.S.M. College of
Pharmacy & Research Centre
VIJAYAPUR-586103

5. Feedback from Faculties on Curriculum *

1. Poor 2. Average 3. Good 4. Excellent

1. How do you rate the sequence of the Courses provided in the curriculum?

2. How do you rate the syllabus of the courses in relation to the competencies expected out of the course?

3. How do you rate the structure framed for entire program?

4. How do you rate the allocation of the credits and contact hours (Lecture-Tutorial-Practical) to the courses?

5. How do you rate the offering of the electives in terms of their relevance to the specialization streams and professional advancements?

6. How do you rate the relevance of the Text Books and reference books by their International recognition to the Courses?

7. Rate the Size of syllabus in terms of the load on the student

8. Rate the courses in terms of sequence of offering considering whether the preceding courses have been covered.

9. Rate the courses in terms of extra learning or self learning considering the design of the courses

10. How do you rate the evaluation scheme designed for each of the course?

11. How do you rate the composition of the courses prescribed by PCI/ RGUHS

12. How do you rate the percentage of courses having LAB components and the domain used for designing the experiments for the LAB components?

6. Any suggestions on Curriculum *

This content is neither created nor endorsed by Google.

Google Forms

A. Anand
Principal,
BLDEA's S.S.M. College of
Pharmacy & Research Centre
VIJAYAPUR-586103

Principal
BLDEA's S.S.M. College of
Pharmacy & Research Centre
VIJAYAPUR-586103

Page 11 of 29

Feedback from Employers on Curriculum

* Indicates required question

1. Email *

2. Name *

3. Designation

4. Phone number

5. Organisation/ institution details


Principal,

**BLDEA's S.S.M. College of
Pharmacy & Research Centre
VIJAYAPUR-586103**

6. Feedback from Employers on Curriculum

	1. Poor	2. Average	3. Good	4. Excellent
1. How do you rate relevance of the courses in relation to the program?	<input type="radio"/>	<input type="radio"/>	<input type="radio"/>	<input type="radio"/>
2. How do you rate the competence of the courses related to industry that are included in the program?	<input type="radio"/>	<input type="radio"/>	<input type="radio"/>	<input type="radio"/>
3. How do you rate the sequence of the units in the syllabus?	<input type="radio"/>	<input type="radio"/>	<input type="radio"/>	<input type="radio"/>
4. Rate the offering of the in relation to the specialization streams?	<input type="radio"/>	<input type="radio"/>	<input type="radio"/>	<input type="radio"/>
5. How do you rate the allocation of the credits and contact hours (Lecture-Tutorial-Practical) to the courses?	<input type="radio"/>	<input type="radio"/>	<input type="radio"/>	<input type="radio"/>
6. How do you rate the offering of the electives in relation to the	<input type="radio"/>	<input type="radio"/>	<input type="radio"/>	<input type="radio"/>

Professional
advancements?

7. How do you
rate the
courses which
are skills
related suiting
to the Industry
included into
the programs?

8. How do you
rate the
applicability of
the domains
and the tools
used for
designing the
experiments in
terms of
existing
practices in the
Industry?

9. How do you
rate the
experiments in
terms of their
relevance to
the real life
application?

10. Rate the
courses in
terms of extra
learning or self
learning
considering the
design of the
courses

B. Anand
Principal,

BLDEA's S.S.M. College of
Pharmacy & Research Centre,
VIJAYAPUR-586103

7. Any suggestions regarding Curriculum *

This content is neither created nor endorsed by Google.

Google Forms

B. Anand
Principal,
BLDEA's S.S.M. College of
Pharmacy & Research Centre
VIJAYAPUR-586103

BLDEA'S S.S.M. COLLEGE OF
PHARMACY & RESEARCH CENTRE
VIJAYAPUR-586103



B. L. D. E. Association's
Shri. Sanganabasava Mahaswamiji
College of Pharmacy & Research Centre, Vijayapura - 586 103
(Formerly; BLDEA's College of Pharmacy, Bijapur (Vijayapura), since 1982)
[Affiliated to RGUHS-Karnataka, Approved by PCI & AICTE-New Delhi, Accredited by NAAC at 'A++']

SAMPLE FILLED QUESTIONNAIRES

Smt. Bangaramma Sajjan Campus, Shri. B. M. Patil Road, Vijayapura-Karnataka-586 103 (INDIA)
www.bldeapharmacy.ac.in, email: bldeascop@yahoo.com, Mob: +91-9513398036, 08352-264004
[BLDE Deemed to be University Campus]

Feedback from Students on Curriculum

Email *

vinayakchavan432@gmail.com

Name *

Vinayak Krishna Chavan

Phone number *

9980456432

Course *

M-Pharm

B. A. Chavan
Principal,
BLDEA's S.S.M. College of
Pharmacy & Research Centre
VIJAYAPUR-586103

Feedback from Students on Curriculum *

	Poor	Average	Good	Excellent
1. How do you rate the sequence of the Courses that you have studied are in sequence to what you have studied in the previous semester?	<input type="radio"/>	<input type="radio"/>	<input checked="" type="radio"/>	<input type="radio"/>
2. How do you rate the syllabus of the courses that you have studied in relation to the competencies expected out of the course?	<input type="radio"/>	<input checked="" type="radio"/>	<input type="radio"/>	<input type="radio"/>
3. How do you rate the relevance of the units in Syllabus relevant to the course?	<input type="radio"/>	<input type="radio"/>	<input checked="" type="radio"/>	<input type="radio"/>
4. How do you rate the sequence of the units in the course?	<input type="radio"/>	<input type="radio"/>	<input type="radio"/>	<input checked="" type="radio"/>
5. How do you rate the distribution of the contact hours among the course components (Lecture-Tutorial-Practical)?	<input type="radio"/>	<input type="radio"/>	<input type="radio"/>	<input checked="" type="radio"/>
6. How do you rate the offering of the electives in terms of their relevance to the specialization streams?	<input type="radio"/>	<input type="radio"/>	<input checked="" type="radio"/>	<input type="radio"/>

streams?
streams?

B. Anand
Principal,
BLDEA's S.S.M. College of
Pharmacy & Research Centre
VIJAYAPUR-586103

7. How do you rate the electives offered in relation to the professional advancements?

8. How do you rate the relevance of the Text Books and reference books by their International recognition to the Courses?

9. Rate the Size of syllabus in terms of the load on the student

10. Rate the courses in terms of extra learning or self learning considering the design of the courses

11. Rate the courses in terms of sequence of offering considering whether the preceding courses have been covered.

12. How do you rate the percentage of courses having LAB components?

13. How do you rate the domain used for designing the experiments for the LAB components?

B. Anand
Principal,

BLDEA's S.S.M. College of
Pharmacy & Research Centre
VIJAYAPUR-586103

14. How do you rate the experiments in relation to the real life Applications?

15. Any suggestions on Curriculum *

Nothing

This form was created inside of BLDE Association Bijapur.

Google Forms

B. A. Qureshi
Principal,
BLDEA's S.S.M. College of
Pharmacy & Research Centre
VIJAYAPUR-586103

Feedback from Alumni on Curriculum

Email *

tomarketan@gmail.com

Name *

KETAN TOMAR

Phone number *

9998099967

Current employment details

Business

Principa,

BLDEA's S.S.M. College of
Pharmacy & Research Centre
VIJAYAPUR-586103

Feedback from Alumni on Curriculum *

	1. Poor	2. Average	3. Good	4. Excellent
1. How do you rate relevance of the courses in relation to the program?	<input type="radio"/>	<input type="radio"/>	<input type="radio"/>	<input checked="" type="radio"/>
2. How do you rate the sequence of the courses included into the programs?	<input type="radio"/>	<input type="radio"/>	<input type="radio"/>	<input checked="" type="radio"/>
3. How do you rate the competencies in relation to the course content?	<input type="radio"/>	<input type="radio"/>	<input type="radio"/>	<input checked="" type="radio"/>
4. How do rate the sequence of the topics in the units?	<input type="radio"/>	<input type="radio"/>	<input type="radio"/>	<input checked="" type="radio"/>
5. Rate the offering of the in relation to the specialization streams?	<input type="radio"/>	<input type="radio"/>	<input type="radio"/>	<input checked="" type="radio"/>
6. How do you rate the offering of the electives in relation to the professional advancements?	<input type="radio"/>	<input checked="" type="radio"/>	<input type="radio"/>	<input type="radio"/>
7. How do you rate the courses which are skills related suiting to the Industry included into the programs?	<input type="radio"/>	<input type="radio"/>	<input checked="" type="radio"/>	<input type="radio"/>
8. How do you rate the domain used for designing the experiments in terms of the suitability of the	<input type="radio"/>	<input checked="" type="radio"/>	<input type="radio"/>	<input type="radio"/>

Tools to the domain?

9. How do you rate the experiments in terms of their relevance to the real life application?

10. How do you rate the courses that you have leant in relation to your current Job

Any suggestions regarding Curriculum *

Should include current technologies used in industry.

This form was created inside of BLDE Association Bijapur.

Google Forms

Principa,

BLDEA's S.S.M. College of
Pharmacy & Research Centre
VIJAYAPUR-586103

Feedback from Faculties on Curriculum

Email *

ssmcpop.gavirajen@bldea.org

Name of the Faculty *

Dr. Gaviraj.E.N

Designation *

Professor and HoD

Phone number *

9449650441

Gaviraj
Principal,

BLDEA's S.S.M. College of
Pharmacy & Research Centre
VIJAYAPUR-586103

Feedback from Faculties on Curriculum *

	1. Poor	2. Average	3. Good	4. Excellent
1. How do you rate the sequence of the Courses provided in the curriculum?	<input type="radio"/>	<input type="radio"/>	<input checked="" type="radio"/>	<input type="radio"/>
2. How do you rate the syllabus of the courses in relation to the competencies expected out of the course?	<input type="radio"/>	<input type="radio"/>	<input checked="" type="radio"/>	<input type="radio"/>
3. How do you rate the structure framed for entire program?	<input type="radio"/>	<input type="radio"/>	<input checked="" type="radio"/>	<input type="radio"/>
4. How do you rate the allocation of the credits and contact hours (Lecture-Tutorial-Practical) to the courses?	<input type="radio"/>	<input type="radio"/>	<input checked="" type="radio"/>	<input type="radio"/>
5. How do you rate the offering of the electives in terms of their relevance to the specialization streams and professional advancements?	<input type="radio"/>	<input type="radio"/>	<input checked="" type="radio"/>	<input type="radio"/>
6. How do you rate the relevance of the Text Books and reference books by their International recognition to the Courses?	<input type="radio"/>	<input type="radio"/>	<input checked="" type="radio"/>	<input type="radio"/>

B. Anand
Principal,
BLDEA's S.S.M. College of
Pharmacy & Research Centre
VIJAYAPUR-586103

7. Rate the Size of syllabus in terms of the load on the student

8. Rate the courses in terms of sequence of offering considering whether the preceding courses have been covered.

9. Rate the courses in terms of extra learning or self learning considering the design of the courses.

10. How do you rate the evaluation scheme designed for each of the course?

11. How do you rate the composition of the courses prescribed by PCI/ RGUHS

12. How do you rate the percentage of courses having LAB components and the domain used for designing the experiments for the LAB components?

B. Anand
Principal,
BLDEA's S.S.M. College of
Pharmacy & Research Centre
TJAYAPUR-586103

Any suggestions on Curriculum *

Syllabus needs to be reduced for some courses

This form was created inside of BLDE Association Bijapur.

Google Forms

As Quest

Principa,
BLDEA's S.S.M. College of
Pharmacy & Research Centre
VIJAYAPUR-586103

Principal,
BLDEA's S.S.M. College of
Pharmacy & Research Centre
VIJAYAPUR-586103

Feedback from Employers on Curriculum

Email *

harshadkumar.patel@zyduscadila.com

Name *

Harshadkumar D. Patel

Designation


Sr.executive

Phone number

09909957578

Organisation/ institution details

Cadila healthcare Ltd


Principal,
BLDEA's S.S.M. College of
Pharmacy & Research Centre
VIJAYAPUR-586103

Feedback from Employers on Curriculum

	1. Poor	2. Average	3. Good	4. Excellent
1. How do you rate relevance of the courses in relation to the program?	<input type="radio"/>	<input type="radio"/>	<input checked="" type="radio"/>	<input type="radio"/>
2. How do you rate the competence of the courses related to industry that are included in the program?	<input type="radio"/>	<input checked="" type="radio"/>	<input type="radio"/>	<input type="radio"/>
3. How do you rate the sequence of the units in the syllabus?	<input type="radio"/>	<input checked="" type="radio"/>	<input type="radio"/>	<input type="radio"/>
4. Rate the offering of the in relation to the specialization streams?	<input type="radio"/>	<input type="radio"/>	<input checked="" type="radio"/>	<input type="radio"/>
5. How do you rate the allocation of the credits and contact hours (Lecture-Tutorial-Practical) to the courses?	<input type="radio"/>	<input checked="" type="radio"/>	<input type="radio"/>	<input type="radio"/>
6. How do you rate the offering of the electives in relation to the Professional advancements?	<input type="radio"/>	<input type="radio"/>	<input checked="" type="radio"/>	<input type="radio"/>
7. How do you rate the courses which are skills related suiting to the Industry included into the programs?	<input type="radio"/>	<input type="radio"/>	<input checked="" type="radio"/>	<input type="radio"/>

8. How do you rate the applicability of the domains and the tools used for designing the experiments in terms of existing practices in the Industry?

9. How do you rate the experiments in terms of their relevance to the real life application?

10. Rate the courses in terms of extra learning or self learning considering the design of the courses

Any suggestions regarding Curriculum *

Focus on students and create your Students experience

This form was created inside of BLDE Association Bijapur.

Google Forms

B. Aneel
Principal,
BLDEA's S.S.M. College of
Pharmacy & Research Centr.
VIJAYAPUR-586103



B. L. D. E. Association's
Shri. Sanganabasava Mahaswamiji

College of Pharmacy & Research Centre, Vijayapura - 586 103

(Formerly; BLDEA's College of Pharmacy, Bijapur (Vijayapura), since 1982)

[Affiliated to RGUHS-Karnataka, Approved by PCI & AICTE-New Delhi, Accredited by NAAC at 'A++']

FEEDBACK ANALYSIS REPORT

Smt. Bangaramma Sajjan Campus, Shri. B. M. Patil Road, Vijayapura-Karnataka-586 103 (INDIA)

www.bldeapharmacy.ac.in, email: bldeascop@yahoo.com, Mob: +91-9513398036, 08352-264004

[BLDE Deemed to be University Campus]



STAKEHOLDERS FEEDBACK REPORT (2021-2022)

Collecting feedback from the stakeholders is most crucial for the success of every institution. All these feedbacks were analysed by using a four-point rating scale. The maximum score is 4 and the minimum score is one, where 4 indicates Excellent, three means Good, Two indicates Average and one indicates Poor.

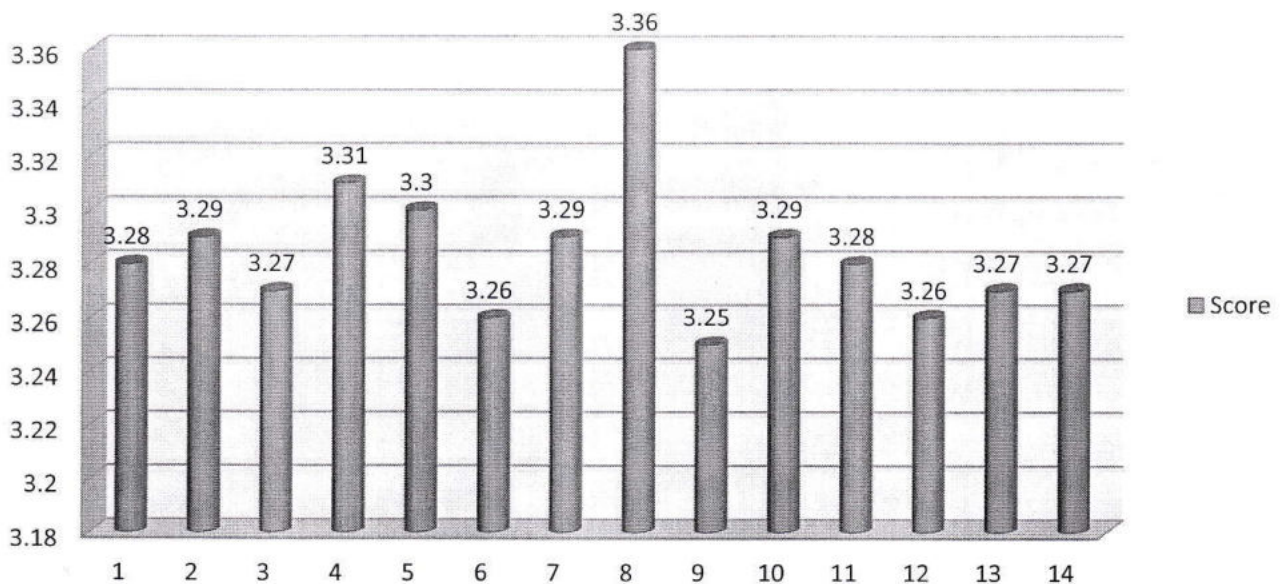
STUDENT FEEDBACK REPORT ON CURRICULUM

The feedback taken from students about the present syllabus and curriculum of the college reveals the following facts:

- Most of the PG and UG students have the opinion that sequence of the courses what they have studied in the previous semester (The Score obtained 3.28).
- The students have rated 3.29 for the syllabus of the courses that they have studied in relation to the competencies expected out of the course.
- The overall most of the PG and UG students have rated 3.27 for the relevance of the units in Syllabus relevant to the course.
- The students have rated 3.3 for the distribution of the contact hours among the course components Lecture-Tutorial-Practical.
- The students have rated 3.26 & 3.29 for the offering of the electives in terms of their relevance to the specialization streams and electives offered in relation to the professional advancements.
- The students have rated 3.36 for the relevance of the Text Books and reference books by their International recognition to the Courses.
- Size of syllabus in terms of the load on the students rated 3.25.
- Courses in terms of extra learning or self learning considering the design of the courses students rated 3.29.
- The percentage of courses having LAB components and the domain used for designing the experiments for the LAB components is rated 3.28 and 3.26 respectively.
- The curriculum is capable of supporting students in their higher studies as per the observation of students. The overall scores 3.27.



STUDENT FEEDBACK ON CURRICULUM



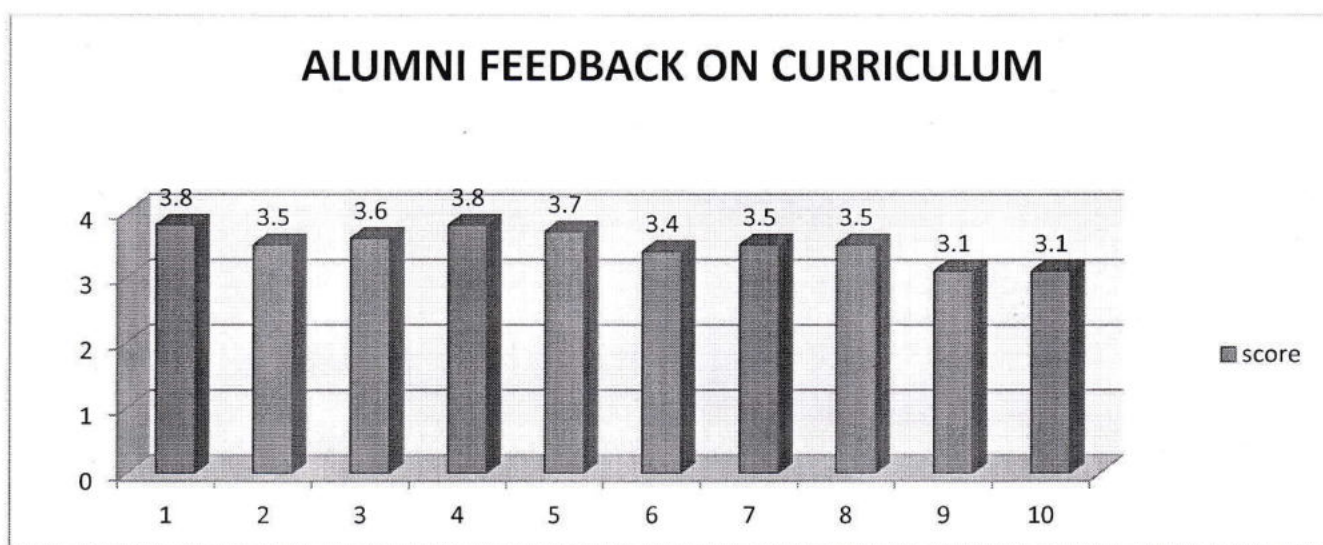
Questionnaires for Feedback from Students on Curriculum

1. How do you rate the sequence of the Courses that you have studied are in sequence to what you have studied in the previous semester.
2. How do you rate the syllabus of the courses that you have studied in relation to the competencies expected out of the course.
3. How do you rate the relevance of the units in Syllabus relevant to the course.
4. How do you rate the sequence of the units in the course.
5. How do you rate the distribution of the contact hours among the course components (Lecture-Tutorial-Practical).
6. How do you rate the offering of the electives in terms of their relevance to the specialization streams.
7. How do you rate the electives offered in relation to the professional advancements.
8. How do you rate the relevance of the Text Books and reference books by their International recognition to the Courses.
9. Rate the Size of syllabus in terms of the load on the student
10. Rate the courses in terms of extra learning or self learning considering the design of the courses.
11. Rate the courses in terms of sequence of offering considering whether the preceding courses have been covered.
12. How do you rate the percentage of courses having LAB components.
13. How do you rate the domain used for designing the experiments for the LAB components.
14. How do you rate the experiments in relation to the real life Applications.



ALUMNI FEEDBACK REPORT ON CURRICULUM

- Most of the alumni are satisfied for relevance of the courses in relation to the program, sequence of the courses included into the programs and the competencies in relation to the course content rated as 3.8/4, 3.5/4 & 3.6/4
- The career oriented topics in the units syllabus offering of the in relation to the specialization streams electives in relation to the professional advancements rated as 3.7/4, 3.4/4 & 3.5/4
- The career-oriented courses which are skills related suiting to the Industry included into the programs courses that they have learnt was quite helpful for them to find out an employment soon after their graduation rated as 3.5 and 3.1



Questionnaires for Feedback from Alumni on Curriculum Alumni

1. How do you rate relevance of the courses in relation to the program.
2. How do you rate the sequence of the courses included into the programs.
3. How do you rate the competencies in relation to the course content.
4. How do rate the sequence of the topics in the units.
5. Rate the offering of the in relation to the specialization streams.
6. How do you rate the offering of the electives in relation to the professional advancements.
7. How do you rate the courses which are skills related suiting to the Industry included into the programs.
8. How do you rate the domain used for designing the experiments in terms of the suitability of the Tools to the domain.
9. How do you rate the experiments in terms of their relevance to the real life application.
10. How do you rate the courses that you have learnt in relation to your current Jobs.



FACULTY FEEDBACK REPORT ON CURRICULUM

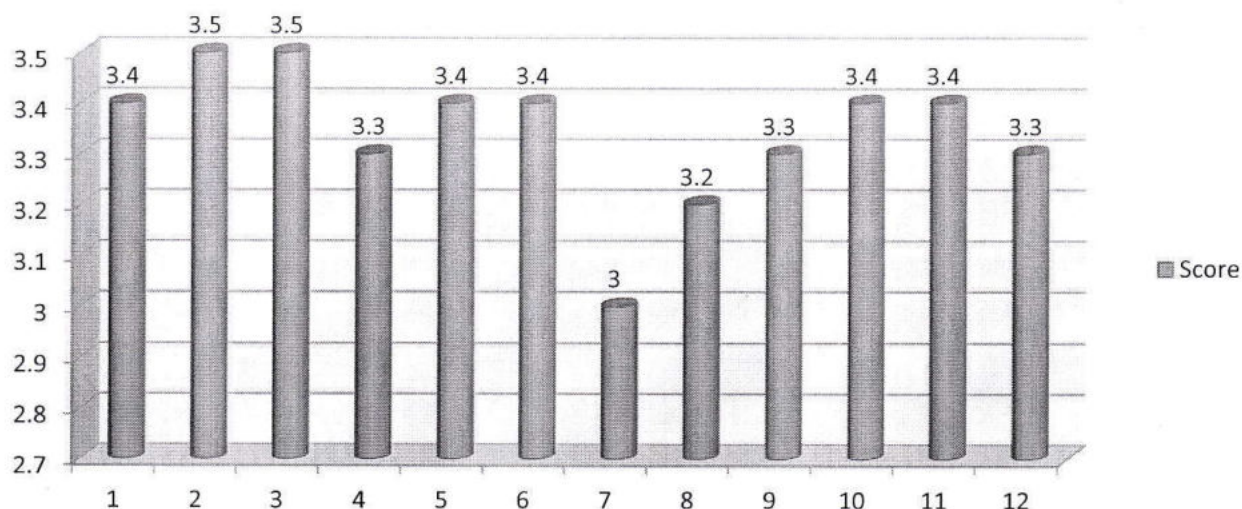
Faculty being the most important person in curriculum design, implementation and development, feedback of faculty on curricular aspects are of utmost importance. Analysis of the faculty feedback for the year 2021-22 brought about the following information.

- The sequence of the Courses provided in the curriculum our college faculty rated as 3.4 /4
- The value given by employees for the syllabus of the courses in relation to the competencies expected out of the course is 3.5/4
- Most of the faculties are satisfied with the structure framed for entire program 3.5/4
- The score obtained for allocation of the credits and contact hours (L-T-P) to the courses is 3.3/4
- The faculty is rated for the offering of the electives in terms of their relevance to the specialization streams and Professional advancements is 3.4/4
- The most of the employees are rated for the relevance of the Text Books and reference books by their International recognition to the Courses is 3.4/4
- The faculties are revealed score for the Size of syllabus in terms of the load on the student is 3.0/4
- The score obtained for the courses in terms of sequence of offering considering whether the preceding courses have been covered is 3.2/4
- The value given by the faculties for the courses in terms of extra learning or self learning considering the design of the courses is 3.3
- Most of the faculties are given score for the evaluation scheme designed for each of the course is 3.4/4
- The faculty is rated for the composition of the courses prescribed by PCI/ RGUHS is 3.4/4
- The faculty is rated for the percentage of courses having LAB components and the domain used for designing the experiments for the LAB components 3.3/4

S. S. M.
Principal,
BLDEA's S.S.M. College of
Pharmacy & Research Centre
VIJAYAPUR-586103



FACULTY FEEDBACK ON CURRICULUM



Questionnaires for Feedback from Faculties on Curriculum

1. How do you rate the sequence of the Courses provided in the curriculum.
2. How do you rate the syllabus of the courses in relation to the competencies expected out of the course.
3. How do you rate the structure framed for entire program.
4. How do you rate the allocation of the credits and contact hours (L-T-P) to the courses.
5. How do you rate the offering of the electives in terms of their relevance to the specialization streams and Professional advancements.
6. How do you rate the relevance of the Text Books and reference books by their International recognition to the Courses.
7. Rate the Size of syllabus in terms of the load on the student.
8. Rate the courses in terms of sequence of offering considering whether the preceding courses have been covered.
9. Rate the courses in terms of extra learning or self learning considering the design of the courses.
10. How do you rate the evaluation scheme designed for each of the course.
11. How do you rate the composition of the courses prescribed by PCI/ RGUHS.
12. How do you rate the percentage of courses having LAB components and the domain used for designing the experiments for the LAB components.


Principal,

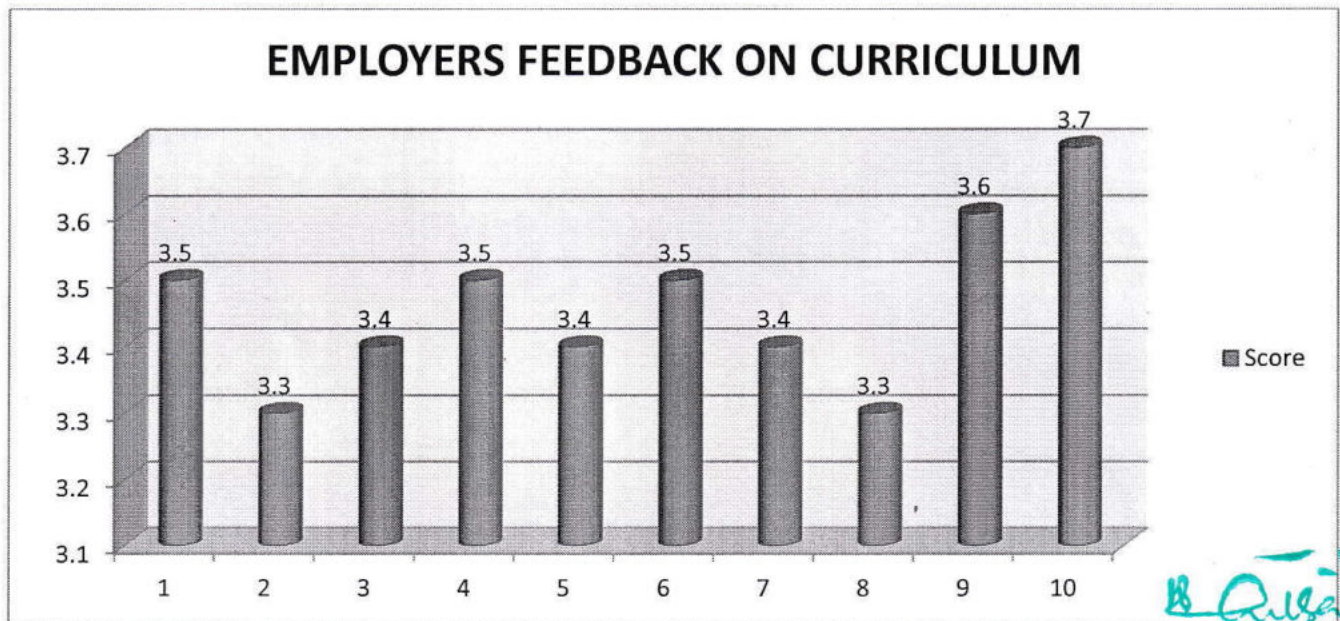
BLDEA's S.S.M. College of
Pharmacy & Research Centre
VIJAYAPUR-586103



EMPLOYERS FEEDBACK REPORT ON CURRICULUM

Employer feedback is the most important determinant of the success of any educational institution. The employer feed-back for the year 2021-2022 revealed the following:

- Most of the employers have the opinion that the curriculum has relevance of the courses in relation to the program (3.5/4)
- Most of the employers have the opinion that the curriculum has the competence of the courses related to industry that are included in the program (3.3/4)
- Some of the employers rated the sequence of the units in the syllabus and the offering of the in relation to the specialization streams is 3.4 & 3.5/4
- The score given for the allocation of the credits and contact hours (L-T-P) to the courses is 3.4/4
- The score given for the offering of the electives in relation to the Professional advancements by employers is 3.5/4
- Most of the employers have the opinion that the curriculum has relevance of the courses which are skills related suiting to the Industry included into the programs 3.4
- The score given for the applicability of the domains and the tools used for designing the experiments in terms of existing practices in the Industry 3.3/4
- The score given for the experiments in terms of their relevance to the real life application 3.6/4
- The score given for the courses in terms of extra learning or self learning considering the design of the courses 3.7/4





B. L. D. E. Association's
Shri. Sanganabasava Mahaswamiji
College of Pharmacy & Research Centre, Vijayapura - 586 103
(Formerly; BLDEA's College of Pharmacy, Bijapur (Vijayapura), since 1982)
[Affiliated to RGUHS-Karnataka, Approved by PCI & AICTE-New Delhi, Accredited by NAAC at A++]

Questioners for Feedback from Employers on Curriculum

1. How do you rate relevance of the courses in relation to the program.
2. How do you rate the competence of the courses related to industry that are included in the program.
3. How do you rate the sequence of the units in the syllabus.
4. Rate the offering of the in relation to the specialization streams.
5. How do you rate the allocation of the credits and contact hours (L-T-P) to the courses.
6. How do you rate the offering of the electives in relation to the Professional advancements.
7. How do you rate the courses which are skills related suiting to the Industry included into the programs.
8. How do you rate the applicability of the domains and the tools used for designing the experiments in terms of existing practices in the Industry.
9. How do you rate the experiments in terms of their relevance to the real life application.
10. Rate the courses in terms of extra learning or self learning considering the design of the courses.

S. S. M.
Principal,
BLDEA'S S.S.M. College of
Pharmacy & Research Centre
VIJAYAPUR-586103



B. L. D. E. Association's

Shri. Sanganabasava Mahaswamiji

College of Pharmacy & Research Centre, Vijayapura - 586 103

(Formerly; BLDEA's College of Pharmacy, Bijapur (Vijayapura), since 1982)

[Affiliated to RGUHS-Karnataka, Approved by PCI & AICTE-New Delhi, Accredited by NAAC at 'A++']

ACTION TAKEN REPORT

Smt. Bangaramma Sajjan Campus, Shri. B. M. Patil Road, Vijayapura-Karnataka-586 103 (INDIA)

www.bldeapharmacy.ac.in, email: bldeascdp@yahoo.com, Mob: +91-9513398036, 08352-264004

[BLDE Deemed to be University Campus]



B. L. D. E. Association's
Shri. Sanganabasava Mahaswamiji

College of Pharmacy & Research Centre, Vijayapura - 586 103

(Formerly; BLDEA's College of Pharmacy, Bijapur (Vijayapura), since 1982)

[Affiliated to RGUHS-Karnataka, Approved by PCI & AICTE-New Delhi, Accredited by NAAC at A++]

Action Taken Report for the Feedback, collected on Curriculum for Session 2021-22

As per the feedback and suggestions received from stake holders same was discussed with higher authorities. We have improvised and implemented new schemes and facilities as follows

1. Wi-Fi access was given to all the UG & PG students in each floor.
2. Most of the students and staffs are suggested for syllabus reframing for semester system communication has been made to university previous year through BOS (Board of Studies) members of RGUHS Karnataka from our college.
3. Most of the students requested to provide class notes in feedback. Unit wise PPTs are provided for better and quick understanding of concepts for students.
4. Digital library was improvised and provided good computers with internet facility and software support like Drug design, XPharma and micromedix.
5. Value added courses, guest lectures and webinars are conducted with Professional Experts to improve the skill and knowledge.
6. Library space was increased and new books are purchased for reference.
7. To improvise the competent capacity in students inter college sports and cultural events were planned and organised.
8. Drinking water facility was provided to each floor.
9. Campus interviews were planned to organise for student's placement and supported to get jobs in reputed companies support was provided through placement cell.

S. S. M.
Principal,
BLDEA's S.S.M. College of
Pharmacy & Research Centre
VIJAYAPUR-586103

Page 08 of 08

Smt. Bangaramma Sajjan Campus, Shri. B. M. Patil Road, Vijayapura-Karnataka-586 103 (INDIA)

www.bldeapharmacy.ac.in, email: bldeascop@yahoo.com, Mob: +91-9513398036, 08352-264004

[BLDE Deemed to be University Campus]