



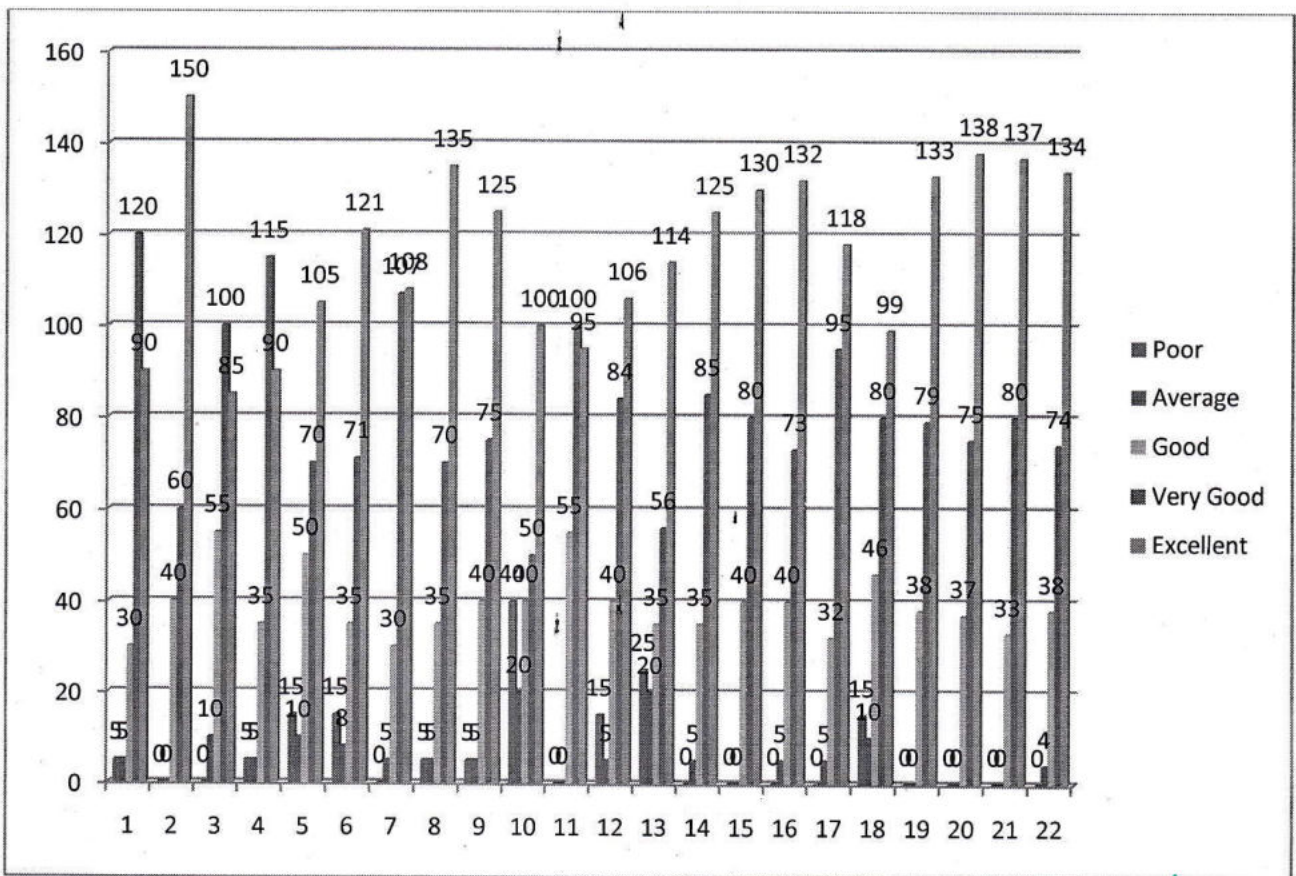
## 2.7 Student's Satisfaction Survey Analysis Report

**Name of the feedback :** Student's Satisfaction Survey

**Total number of response from students:** 250

**Academic year :** 2021-22

**Graphical analysis :**



[Signature]

**Principal,**  
 BLDEA's S.S.M. College of  
 Pharmacy & Research Centre  
 VIJAYAPUR-586103





**B. L. D. E. Association's**  
**Shri. Sanganabasava Mahaswamiji**  
**College of Pharmacy & Research Centre, Vijayapura - 586 103**  
 (Formerly; BLDEA's College of Pharmacy, Bijapur (Vijayapura), since 1982)  
 [Affiliated to RGUHS-Karnataka, Approved by PCI & AICTE-New Delhi, Accredited by NAAC at 'A++']

Sr. No	Evaluation Parameters (Questions)	0	1	2	3	4
1	How much of the curricula and syllabi are covered in the Discipline in which you are studying?	5	5	30	120	90
2	What categories of teachers are involved in the theory and practical classes in your discipline?	0	0	40	60	150
3	What percentage of teachers is effectively communicating domain knowledge, IT skills and Soft Skills in the Teaching Learning Process?	0	10	55	100	85
4	Do the teachers build-up in you the expected curricular competencies, programme outcomes and course outcomes?	5	5	35	115	90
5	Does your mentor do necessary follow up of the tasks assigned to you?	15	10	50	70	105
6	To what extent the mentoring process in your institution is beneficial to you for cognitive, social and emotional growth?	15	8	35	71	121
7	To what extent clinical and practical facilities related to your discipline have been made available to you?	0	5	30	107	108
8	What extent of training you are provided in the skill and simulation labs, clinical ward rounds / rotations and lab exercises related to your discipline?	5	5	35	70	135
9	What percentage of teachers use ICT-enabled methods like multimedia, web-based learning and national e-resources while teaching?	5	5	40	75	125
10	What is the extent of opportunities given to you for outdoor learning like internship, student exchanges, field visits and projects?	40	20	40	50	100
11	Does the institution provide the opportunities for experiential learning, like problem-based learning, case-based learning, evidence-based learning, competency building, seminars, group discussions, to enhance knowledge and skills in your discipline?	0	0	55	100	95
12	What is the level of opportunities provided by your institution to develop employability and entrepreneurship skills to prepare you for your career?	15	5	40	84	106
13	What is the level of value-added courses / training given by your institution in the area of professional ethics and values, community service, preventive health care and rural health care?	25	20	35	56	114
14	What level of monitoring and evaluation is available in your institution for assessing the effectiveness and interactivensess of the classroom/learning sessions?	0	5	35	85	125
15	To what extent the institutional ambience and class room teaching has improved your creative thinking and analytical skills?	0	0	40	80	130
16	How frequently your performance in academic assignments are discussed and reviewed with you by the teachers?	0	5	40	73	132
17	What is your assessment about the fairness of the internal evaluation process by the teachers?	0	5	32	95	118
18	What is the average time taken by the institution for declaration of examination results?	15	10	46	80	99
19	What are the mechanisms (issue of photocopy of answer sheet, re-totaling, re-evaluation and provision of grace marks) available in your institution for redressal of grievances with reference to examinations?	0	0	38	79	133
20	How do you rate the procedures involved in the pre examination, examination and post examination processes of the evaluation system adopted by your institution?	0	0	37	75	138
21	Do your teachers enable you to identify your strengths and weaknesses and help you to develop your strengths and overcome your weaknesses by providing timely counseling and care?	0	0	33	80	137
22	If you were to award rating of your institution in terms of "stars" in relation to quality of teaching learning and evaluation, what would be your rating?	0	4	38	74	134

\* 0- Poor, 1-Average, 2- Good, 3-Very Good, 4-Excellent

Smt. Bangaramma Sajjan Campus, Shri. B. M. Patil Road, Vijayapura-Karnataka-586 103 (INDIA)  
 www.bldeapharmacy.ac.in, email: bldeascop@yahoo.com, Mob: +91-9513398036, 08352-264004

[BLDE Deemed to be University Campus]

*Principal,*  
**BLDEA'S S.S.M. College of**  
**Pharmacy & Research Centre**  
**VIJAYAPUR-586103**  
 24/7/2023