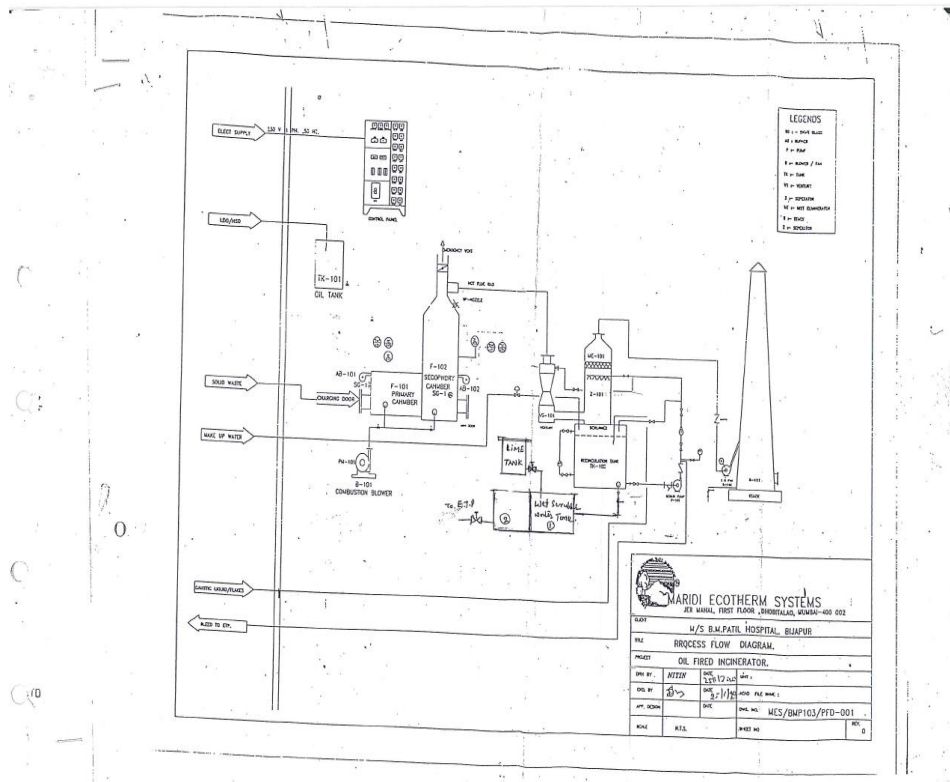


## Waste management

The BLDEA's SSM College of Pharmacy and Research centre, Vijaypur made a MOU with BLDE University, Vijaypur. The BLDEA's Shri B M Patil Medical College have a robust Biomedical Waste Management Committee headed by Medical Superintendent which takes care of segregation of biomedical waste which is submitted for disposal. ETP, STP and incinerator plant are maintained according to Karnataka State Pollution Control Board Regulations. The Biomedical Waste Management committee takes responsibility of disposal of electric and electronic wastes. The old versions of computers in working condition are being distributed to various schools of the Sponsoring Society.

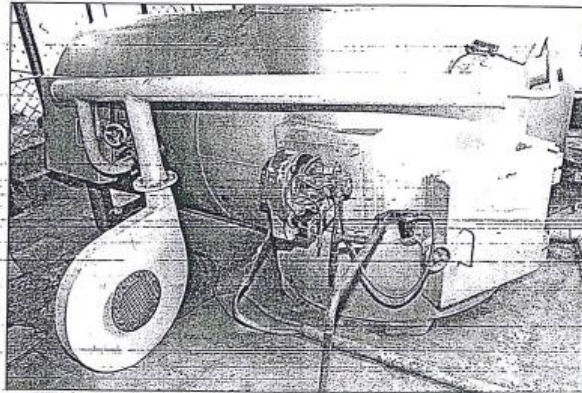
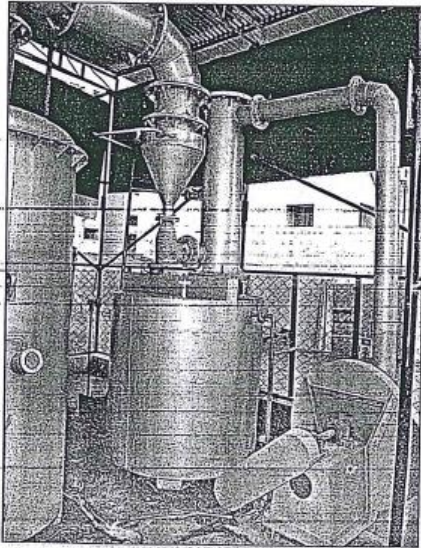
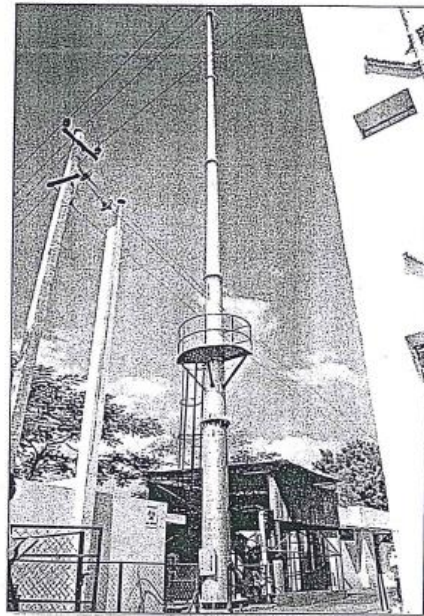
### Incinerator Plant



# *B. M. Patil Medical College Hospital and Research Centre, Bijapur.*

## *Incinerator Section*

*Bed Strength : 720*





*B. M. Patil Medical College Hospital and  
Research Centre, Bijapur.*

*Waste Collection & Storage*

Bed Strength : 720

